

Clean. Safe. Reliable.

WaterPEX®.

Our Complete System of Pipes, Valves, and Fittings for Plumbing
is Even More Comprehensive



The future of plumbing systems is WaterPEX®.

With 125 years of experience, Watts knows plumbing and heating. With the addition of the WaterPEX®a, our complete PEX line of fittings and tubing is now a total PEX solution. Plus, our wide range of fittings let you use the connection tools you prefer.

Your complete source for:

- The most connection options
- Broad range of accessories
- Excellent technical support

The Watts WaterPEX Potable Water System for Professional Plumbers



Introducing WaterPEX®a...

New to the WaterPEX family, WaterPEX®a is our new potable application tubing designed to work with a range of connection types, including F1960 cold-expansion. WaterPEXa is available in 1/2", 3/4", or 1" sizes.

Your Choice of Fittings:

- Expansion ASTM 1960
- Cinch
- Crimp



**Watts WaterPEXa
Coils and Sticks**

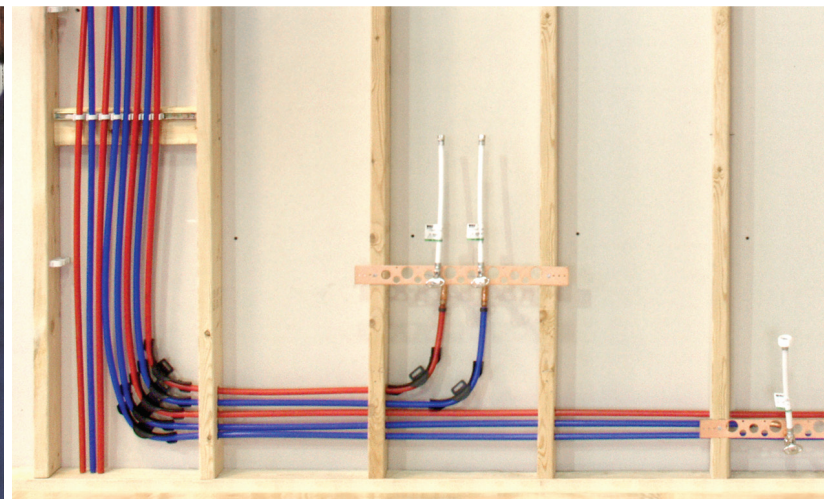
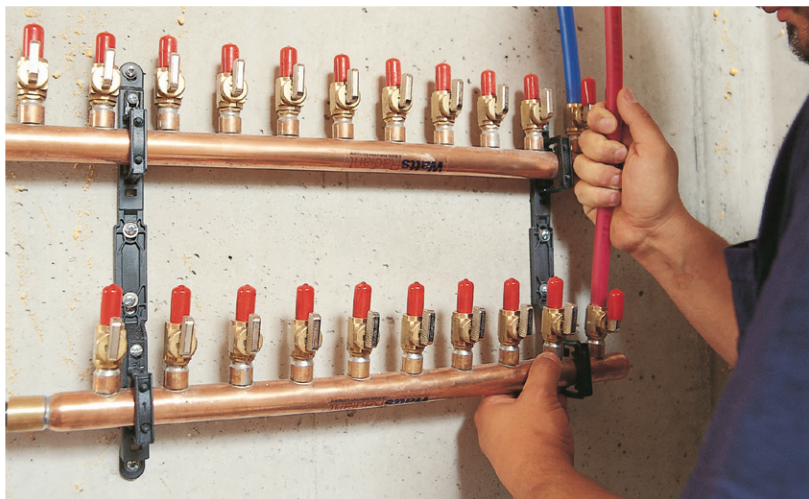
Multi-Port Tees

**Brackets, Supports,
and Fasteners**

Crimp Fittings

**Stops, Valves,
and Accessories**

Crimp Tools



WaterPEX®a Tubing

White coils or sticks with red, blue, or black print

WaterPEX®a Tubing is a cross-linked polyethylene tubing used for potable water applications and is manufactured without an oxygen barrier. Systems are intended to be plumbed using Watts WaterPEXa cross-linked polyethylene pipe, and all joints should be made using Watts brass CrimpRing™ and/or Poly-alloy CrimpRing™ fittings using either the Watts copper CrimpRing or stainless steel CinchClamp™** crimping methods or Watts Brass or EP F1960 fittings and expansion sleeve as outlined in the Watts WaterPEXa Installation Guidelines.

****Watts WaterPEX CinchClamp™ fittings should not be used with wrought copper PEX fittings.**



WaterPEXa Fittings

Brass F1960 Fittings

Brass adapters, couplers, tees, elbows and more for use with WaterPEXa when making cold expansion connections. Use with PEX sleeves for a secure connection. *Note F1960 connections require WaterPEXa tubing.*



Adapters



Coupling



Multi-Port Tee

PPSU F1960 Fittings

PPSU tees, adapters, couplers, and elbows for use with WaterPEXa when making cold expansion connections. Use with PEX sleeves for a secure connection.



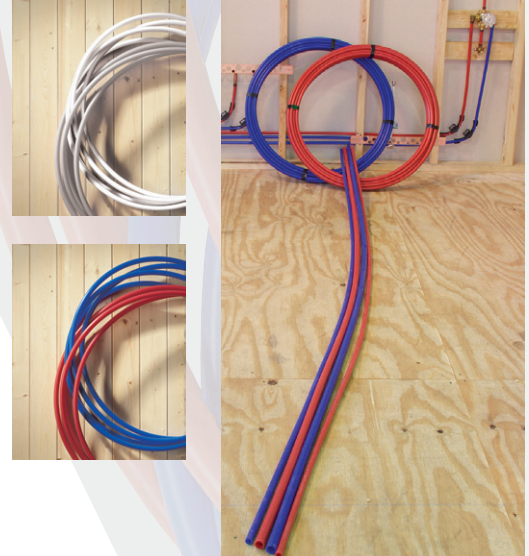
The Watts WaterPEX® Potable Water System for Professional Plumbers

Watts WaterPEX® Coils and Sticks

WaterPEX is available in 1/4", 3/8", 1/2", 3/4", 1", 1 1/4", 1 1/2", and 2" sizes, in coils ranging from 100' to 1000'. 20' sticks are available in 1/2" and 3/4" sizes.

Manifolds

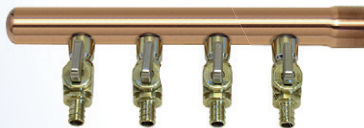
Manifolds are offered in many styles, including Flow-through, Swedged, and CustomCut™. Copper manifolds can be ordered with or without Mini Ball Valves.



WPPM Mini's



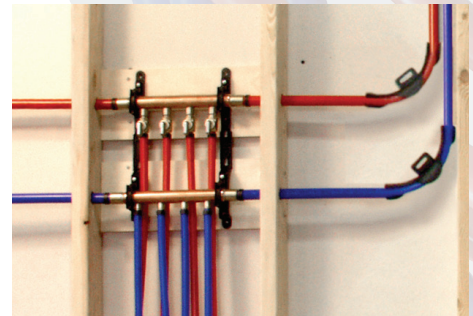
WPQCM-5



Copper Manifold

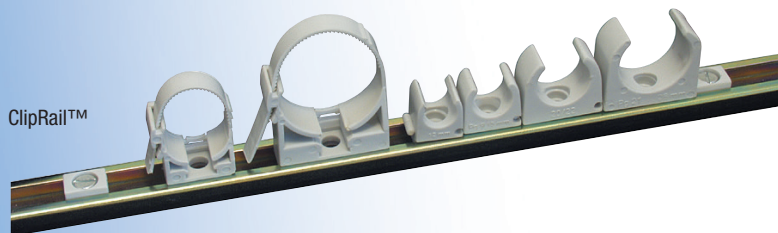


Mini Ball Valve (MBV)



Brackets, Supports, and Fasteners

All the fasteners and brackets needed for a potable system are available, including WaterPEX tubing fasteners, manifold mounting brackets, PEX bend supports, and stubout brackets.



ClipRail™



SnapClip™



Bend Supports



StrapDown™



*The wetted surface of this product contacted by consumable water contains less than 0.25% of lead by weight.



Poly-Alloy Fittings



Brass Fittings



CinchClamps™

Crimp Fittings

Crimp fittings include adapters, couplings, tees, and elbows. CinchClamps™ and CrimpRings™ connect 3/8", 1/2", 3/4", 1", and 1 1/4" sizes. Fittings are brass or poly-alloy ACUDEL polymer, and manufactured to precise ASTM dimensions.

Crimp Tools

Our selection of tools makes this the easiest potable system you'll ever install. All you need is a PEX unwinder, tubing cutter, CinchTool™, CrimpAll™, RingMaster™, or CrimpMaster™ tool, and a Go/No-Go Gauge for checking CrimpRing™ connections.



CinchTool™



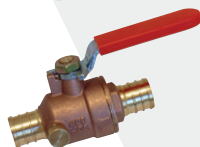
CrimpAll™



CrimpMaster™

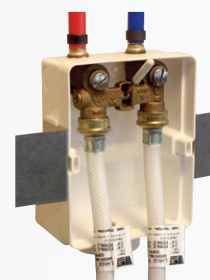
Stops and Valves

Watts offers a wide selection of 1/4-turn chrome stops — crimp, compression, and sweat. We also have full-port ball valves with crimp fittings.



Accessories

Washing machine "water-off" valves, icemaker valves, and a variety of attractive enclosures for these devices are also available.



Also available from Watts:

Radiant Heating and Snow Melt Solutions

Oxygen barrier tubing for hydronic radiant applications



RadiantPEX+™



RadiantPERT™



RadiantPEX-AL™



Onix®

Full Range of Sensors & Controls

Adding comfort, convenience and reliability



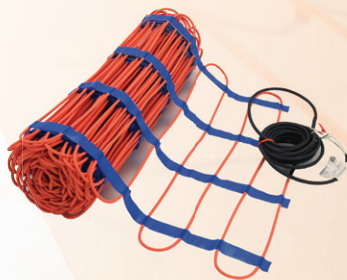
Snow Melting and Heating Controls

Electric Floor Warming Solutions

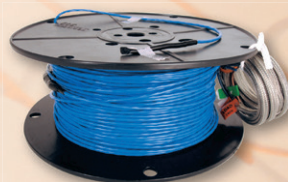
Easy-to-use and install floor heating and snow melting



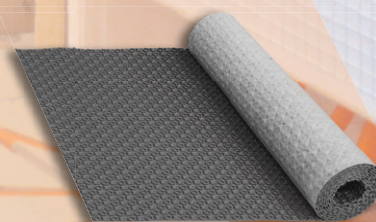
TapeMat® Kits



ProMelt® Mat



WarmWire® Spool



HeatMatrix™

Watts Family of Brands

Watts designs, manufactures, and sells an extensive line of flow control, water safety, water filtration & treatment, drainage, and PEX plumbing products.

The Watts family of companies provides a single source for solutions used to safely convey, conserve, and manage water.

Making Watts your single source for plumbing-related solutions will streamline your operations, save you money, and reduce the variety of repair parts needed for maintenance.

